

Rollins College

Rollins Scholarship Online

College of Liberal Arts Catalogs

College Catalogs

1890

Rollins College Catalog 1890-1891

Rollins College

Follow this and additional works at: https://scholarship.rollins.edu/catalogs_liberalarts

Recommended Citation

Rollins College, "Rollins College Catalog 1890-1891" (1890). *College of Liberal Arts Catalogs*. 159.
https://scholarship.rollins.edu/catalogs_liberalarts/159

This Catalog is brought to you for free and open access by the College Catalogs at Rollins Scholarship Online. It has been accepted for inclusion in College of Liberal Arts Catalogs by an authorized administrator of Rollins Scholarship Online. For more information, please contact rwalton@rollins.edu.

THE UNIVERSITY OF THE
STATE OF FLORIDA
UNIVERSITY OF FLORIDA

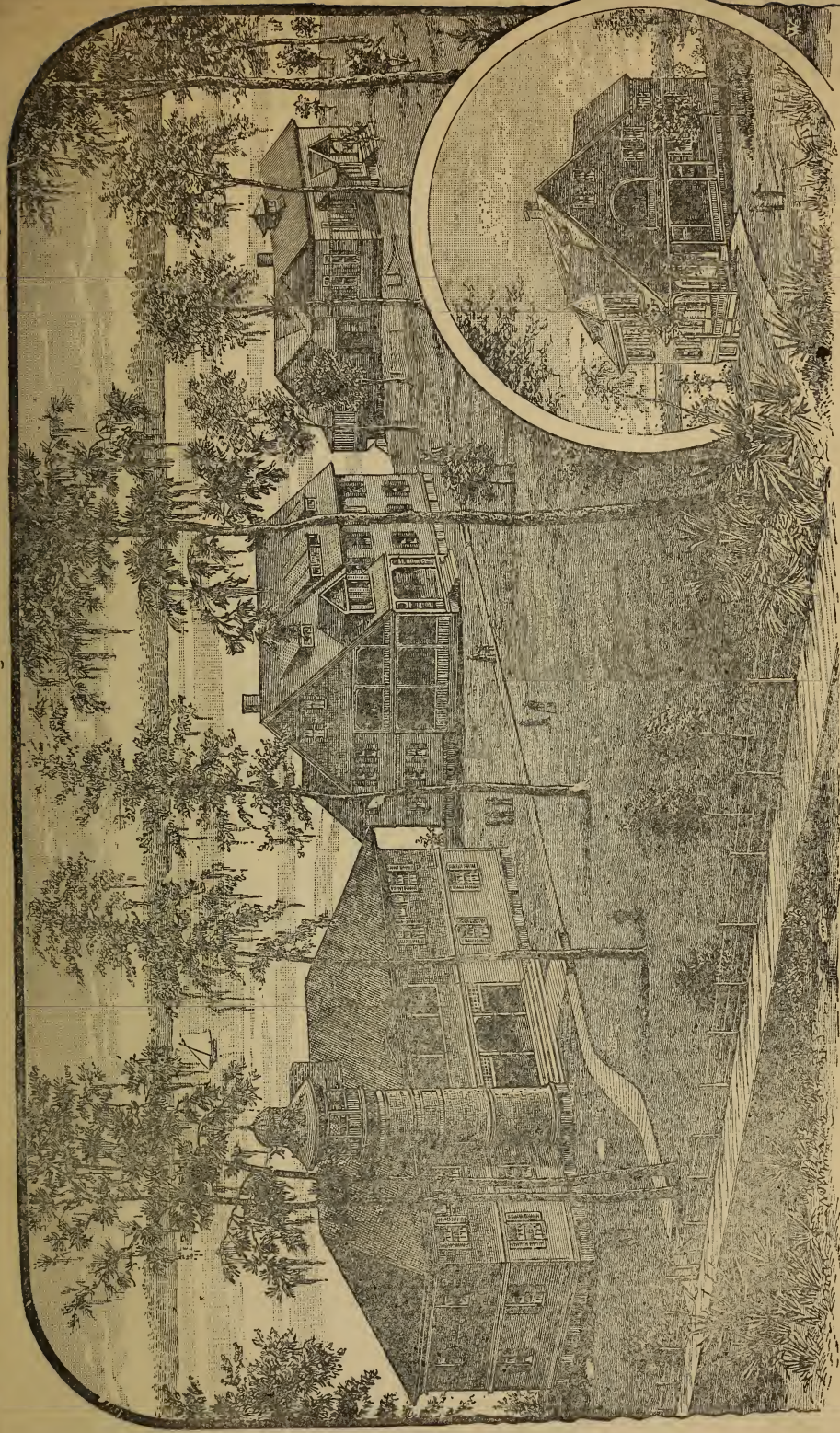
CATALOGUE

—OF—

ROLLINS COLLEGE,

Winter Park, Florida.

1890-91.



KNOWLES' HALL

LADIES' COTTAGE.

DINING HALL.
GENTLEMEN'S COTTAGE

R65h
1890/91

Catalogue

—OF—

ROLLINS COLLEGE,

WINTER PARK, FLORIDA.

1890-1.

BOARD OF TRUSTEES.

REV. E. P. HOOKER, D. D., President, Winter Park.
W. R. O'NEAL, Auditor, Orlando.
W. C. COMSTOCK, Chicago, Ill.
F. W. LYMAN, Minneapolis, Minn.
FRANKLIN FAIRBANKS, St. Johnsbury, Vt.
REV. M. C. WELCH, Pomona.
REV. G. R. ALDEN, Winter Park.
HENRY FOSTER, M. D., Clifton Springs, N. Y.
REV. SIDNEY CRAWFORD, Tampa.
REV. C. M. BINGHAM, Daytona.
HON. A. J. RUSSELL, Tallahassee.
F. E. NETTLETON, Lake Helen.
REV. B. T. STAFFORD, Mount Dora.
REV. S. F. GALE, Jacksonville.
REV. R. T. HALL, Jacksonville.
C. H. HUTCHINS, Worcester, Mass.
REV. A. H. MISSILDINE, Winter Park.
REV. W. D. BROWN, Interlachen.
REV. MASON NOBLE, South Lake Weir.

EXECUTIVE COMMITTEE.

F. W. LYMAN,	REV. E. P. HOOKER,
REV. G. R. ALDEN,	REV. S. F. GALE,
REV. M. C. WELCH.	

HENRY HUNTINGTON, Treasurer, Winter Park.

NATHAN BARROWS, A. M., M. D., Secretary, Winter Park.

FAULTY.

REV. E. P. HOOKER, D. D.,

President.

NATHAN BARROWS, A. M., M. D.,

Professor of Mathematics.

REV. L. A. AUSTIN, A. M.,

Professor of Latin Language and Literature and Principal
of the Academic and Preparatory Departments.

J. H. FORD, A. M.,

Professor of Greek Language and Literature.

MISS ANNIE W. MORTON,

Professor of History.

MISS LOUISE M. ABBOTT,

Principal of the Ladies' Department and of the Sub-Pre-
paratory Department.

MISS EVA J. ROOT, M. S.,

Instructor in French and Natural Science.

CARL HADMAN, Ph. D.,

Instructor in German, Spanish, Chemistry and Book-
keeping.

MISS LANIE CURTIS,

Assistant in the Sub-Preparatory Department.

MISS KATE W. PECK,

Instructor in Instrumental and Vocal Music.

Instructor in Drawing and Painting.

GEORGE PORTER, M. D.,

M. A. HENKEL, M. D.,

Medical Examiners for the Gymnasium.

MRS. H. M. ROBINSON,

Matron.



Abbreviations.



CL.,	-	-	Classical Course.
SC.,	-	-	Scientific Course.
A.,	-	-	Academic Course.
SP.,	-	-	Special Students.



STUDENTS.

1889-90.

SENIORS.

CLARA LOUISE GUILD, Cl.,	-	-	-	-	Winter Park.
IDA MAY MISSILDINE, Cl.,	-	-	-	-	Winter Park.

SOPHOMORES.

STUART R. BAKER, Cl.,	-	-	-	-	Orlando
W. HAMILTON JOHNSON, Cl.,	-	-	-	-	Orlando.
WALTER V. McDUFFEE, Cl.,	-	-	-	-	Orange City.

FRESHMEN.

ELIZABETH R. HOOKER, Cl.,	-	-	-	-	Winter Park.
STUART V. R. HOOKER, Cl.,	-	-	-	-	Winter Park.

ACADEMIC AND PREPARATORY DEPARTMENTS.

FOURTH YEAR.

RAYMOND M. ALDEN, Cl.,	-	-	-	-	Winter Park.
HUBERT R. BERRY, Sc.,	-	-	-	-	Lakemont.
MARIAN CURTIS, A.,	-	-	-	-	Orlando.
FIDELIA FISK, A.,	-	-	-	-	Morrisville, Vt.
MARIA FLETCHER, A.,	-	-	-	-	Orlando.
EMILY G. HOOKER, Cl.,	-	-	-	-	Winter Park.
ALTON W. LANE, Sc.,	-	-	-	-	Winter Park.
ALICE A. McDUFFEE, Sc.,	-	-	-	-	Orange City.

THIRD YEAR.

ERNEST E. MISSELDINE, Cl.,	-	-	-	-	Winter Park.
HOBART A. WHITMAN, Cl.,	-	-	-	-	Worcester, Mass.
JOHN WILD, Cl.,	-	-	-	-	Manchester, Vt.

SECOND YEAR.

WILL M. ARCHIBALD, Cl.,	-	-	-	-	Jacksonville.
ROBERT BENEDICT, Sc.,	-	-	-	-	Fort Meade.
J. CARNEY DOLIVE, Sc.,	-	-	-	-	Orlando.
BESSIE HAWLEY, A.,	-	-	-	-	Tampa.
LOUIS S. LARTIGUE, Sc.,	-	-	-	-	Orlando.
LOIS A. W. PARKER, Cl.,	-	-	-	-	Orange City.
LOUIE B. ROE, Sc.,	-	-	-	-	Winter Park.
MAUD A. TAYLOR, Sc.,	-	-	-	-	Orlando.

FIRST YEAR.

WILEY W. ABERCROMBIE, Cl.,	-	-	-	-	-	Winter Park.
MARCUS M. ALEXANDER, Cl.,	-	-	-	-	-	Maitland.
De B. BATCHELOR, A.,	-	-	-	-	-	Winter Park.
MAUD E. COAN, Cl.,	-	-	-	-	-	Winter Park.
F. STUART CRAWFORD, Cl.,	-	-	-	-	-	Tampa.
JAMES F. CRENSHAW, Cl.,	-	-	-	-	-	Orange City.
HENRY L. DOLIVE, Cl.,	-	-	-	-	-	Orlando.
RUTH C. FORD, Cl.,	-	-	-	-	-	Winter Park.
EDNA H. GILES, Cl.,	-	-	-	-	-	Orlando.
KATHERINE H. LYMAN, A.,	-	-	-	-	-	Minneapolis, Minn.
SAM. B. McLIN, A.,	-	-	-	-	-	Orlando.
ERNEST MITCHELL, A.,	-	-	-	-	-	Formosa.
FRED. B. PETERSON, A.,	-	-	-	-	-	Rockford, Ill.
HARRISON M. REID, Cl.,	-	-	-	-	-	Jacksonville.
WILL H. ROBB, A.,	-	-	-	-	-	DeLand.
SIDNEY SMITH, A.,	-	-	-	-	-	Rockford, Ill.
FRED. C. WARD, A.,	-	-	-	-	-	Lakemont.
CECIL HOWARD VAN SICKLE, Cl.,	-	-	-	-	-	Winter Park.

UNCLASSIFIED.

GRACE BINGHAM,	-	-	-	-	-	Daytona.
MARY BROWNE,	-	-	-	-	-	North Fairfield, O.
EMMA CAMPBELL, Sp.,	-	-	-	-	-	Orlando.
SADIE CHITSEY, Sp.,	-	-	-	-	-	New Haven, Conn.
EDWARD CLIPPINGER,	-	-	-	-	-	Orlando.
LAURA DART, Sp.,	-	-	-	-	-	Maitland.
EDWARD O. DORSEY,	-	-	-	-	-	Orlando.
ADEL M. DUER, Sp.,	-	-	-	-	-	Willcox.
ALYS S. DUER, Sp.,	-	-	-	-	-	Willcox.
GERTRUDE FLETCHER, Sp.,	-	-	-	-	-	Orlando.
J. WALLACE HOYT,	-	-	-	-	-	Tampa.
R. DUDLEY JOHNSON,	-	-	-	-	-	Orlando.
ADDIE KIMBROUGH, Sp.,	-	-	-	-	-	Orlando.
FREDERICK LEWIS LEWTON,	-	-	-	-	-	Altamonte.
ERNEST N. MILLS,	-	-	-	-	-	Orlando.
LUCY MILLS, Sp.,	-	-	-	-	-	Orlando.
LENA MIZELL, Sp.,	-	-	-	-	-	Lakemont.
ALICE R. RICHARDSON,	-	-	-	-	-	Boston, Mass.
A. WINSTON SCRUGGS,	-	-	-	-	-	Orlando.
ARCHIE D. SHAW,	-	-	-	-	-	Chicago, Ill.
BESSIE WATSON,	-	-	-	-	-	Nashville, Tenn.
LULA WATSON,	-	-	-	-	-	Windsor.

SUB-PREPARATORY DEPARTMENT.

THIRD YEAR.

HENRY BARTLETT,	-	-	-	-	-	-	Orlando.
KITTIE M. FRANZ,	-	-	-	-	-	-	Seffner.
E. CLARENCE HOOKER,	-	-	-	-	-	-	Winter Park.
BETTICE HUDDLESTON,	-	-	-	-	-	-	Eufaula, Ala.

SECOND YEAR.

S. JEROME CAPEN,	-	-	-	-	-	-	Winter Park.
FANNIE J. CAREY,	-	-	-	-	-	-	Winter Park.
MEMIE H. COFIELD,	-	-	-	-	-	-	Geneva.
GERTRUDE E. FORD,	-	-	-	-	-	-	Winter Park.
THOMAS M. HENKEL,	-	-	-	-	-	-	Winter Park.
ANNA M. HENKEL,	-	-	-	-	-	-	Winter Park.
MAY S. HOOKER,	-	-	-	-	-	-	Winter Park.
MATTIE E. KEIGWIN,	-	-	-	-	-	-	Winter Park.
ARTHUR W. KING,	-	-	-	-	-	-	Villa City.
IVY W. LEWTON,	-	-	-	-	-	-	Altamonte.
CHARLES LARTIGUE,	-	-	-	-	-	-	Orlando.
KATE LARTIGUE,	-	-	-	-	-	-	Orlando.
DICK H. MARKS,	-	-	-	-	-	-	Orlando.
MAMIE S. TAYLOR,	-	-	-	-	-	-	Winter Park.
JESSIE W. TAYLOR,	-	-	-	-	-	-	Winter Park.
LENA M. TENNEY,	-	-	-	-	-	-	Forest City.
CHARLEY H. VANDERPOOL,	-	-	-	-	-	-	Lake Maitland.
FREDERICK W. WILMOTT,	-	-	-	-	-	-	Orlando.
BLANCHE E. WILMOTT,	-	-	-	-	-	-	Orlando.

FIRST YEAR.

CHARLES OTTO CAREY,	-	-	-	-	-	-	Winter Park.
HAROLD COLLINS,	-	-	-	-	-	-	Brooklyn, N. Y.
PAULA DOMERICK,	-	-	-	-	-	-	New York City.
JOSEPH K. DORN,	-	-	-	-	-	-	Winter Park.
D. ASHLEY HOOKER,	-	-	-	-	-	-	Winter Park.
WILLIE I. HUFFSTETLER,	-	-	-	-	-	-	Orlando.
LINDLEY JONES,	-	-	-	-	-	-	Decatur, Ill.
STEWART S. JONES,	-	-	-	-	-	-	Winter Park.
ARTHUR R. MAXSON,	-	-	-	-	-	-	Winter Park.
THOMAS L. MINOR,	-	-	-	-	-	-	Crown Point.
A. ANDERSON PAUL,	-	-	-	-	-	-	Winter Park.
CARRIE A. PRICE,	-	-	-	-	-	-	Orlando.
LILIA REID,	-	-	-	-	-	-	Winter Park.
HARRY VANDERPOOL,	-	-	-	-	-	-	Lake Maitland.
PERCY YOUNG,	-	-	-	-	-	-	Longwood.

COURSES OF STUDY.

10

ROLLINS COLLEGE.

PREPARATORY DEPARTMENT.			ACADEMIC DEPARTMENT.
TERM.	CLASSICAL COURSE.	SCIENTIFIC COURSE.	
1	Algebra. Latin Lessons. English.	Algebra. Latin Lessons. English.	Algebra. Physical Geography. English.
2.	Algebra. Latin Lessons. English.	Algebra. Latin Lessons. English.	Algebra. Physics. English.
3.	Algebra. Latin Lessons. English.	Algebra. Latin Lessons. English.	Algebra. Civil Government. English.
1	Cæsar and Latin Composition. Greek Lessons. Geometry.	Cæsar and Latin Composition. Physical Geography. Geometry.	French. Ancient History. Geometry.
2.	Cæsar and Latin Composition. Greek Lessons. Geometry.	Cæsar and Latin Composition. Physics. Geometry.	French. Medieval History. Geometry.
3.	Cæsar and Roman History. Grecian History. Civil Government or Arithmetic.	Cæsar and Roman History. Arithmetic. Civil Government.	French. Modern History. Zoology.

FIRST YEAR.

SECOND YEAR.

THIRD YEAR.			FOURTH YEAR.		
1.	Cicero and Latin Composition. Anabasis and Greek Composition. French.	Cicero and Latin Composition. Ancient History. French.	German. Astronomy. Chemistry.		
2.	Cicero and Latin Composition. Anabasis and Greek Composition. French.	Cicero and Latin Composition. Medieval History. French.	German. Botany. Physiology.		
3.	Virgil. Anabasis. French.	Virgil. Modern History. French.	German. History of English Language. Logic.		
1.	Virgil. Homer. Algebra.	Virgil. Astronomy. Algebra.	Rhetoric or Mental Science. English Literature. History of Civilization.	*	
2.	Physiology. Homer. Algebra.	Physiology. Botany. Algebra.	Moral Science. Geology. English Literature.	*	
3.	Virgil. Herodotus. Solid Geometry.	Virgil. Earth and Man. Solid Geometry.	Political Economy. Geology. Evidences of Christianity.	*	

* Optional with a second year in French or German. Music or Painting may be substituted for one study in each term of the Academic Course, with the approval of the Principal of the Department.

COLLEGIATE DEPARTMENT.

FRESHMAN YEAR.			SOPHOMORE YEAR.		
TERM.	CLASSICAL COURSE.	SCIENTIFIC COURSE.	TERM.	CLASSICAL COURSE.	SCIENTIFIC COURSE.
1.	Livy. Rhetoric. Trigonometry and Surveying.	Livy. Rhetoric. Trigonometry and Surveying.	1.	Sophocles. Chemistry. Mechanics.	History of Civilization. Chemistry. Mechanics.
2.	Tacitus. Memorabilia. Trigonometry and Surveying.	Tacitus. English History. Trigonometry and Surveying.	2.	Juvenal or Plautus. Chemistry. Mechanics.	Juvenal or Plautus. Chemistry. Mechanics.
3.	Horace. Demosthenes. Analytical Geometry.	Horace. History of the English Language. Analytical Geometry.	3.	Zoology. Logic. Calculus.	Zoology. Logic. Calculus.

JUNIOR YEAR.			SENIOR YEAR.		
1.	German. Physics. Astronomy.	German. Physics. Astronomy.			
2.	German. Physics. Botany.	German. Physics. Botany.			
3.	German. Botany. Whately's Rhetoric.	German. Botany. Whately's Rhetoric.			
1	Mental Science. English Literature. Constitutional and International Law.	Mental Science. English Literature. Constitutional and International Law.			
2	Moral Science. English Literature. Geology.	Moral Science. English Literature. Geology.			
3.	Political Economy. Geology. Evidences of Christianity.	Political Economy. Geology. Evidences of Christianity.			

GRADUATES of the Classical Course of the College receive the degree of A. B. Upon graduates of the Scientific Course the degree of B. S. is conferred.

Thorough preparation for these courses is given in the Preparatory Department.

The Academic Course, provided for those who cannot complete the full curriculum, includes most of the studies of the other courses, except Latin, Greek, higher Mathematics and advanced Natural Science. To those who complete this course a certificate of graduation is given.

The study of English in the first year of the Preparatory and Academic Departments is provided to secure a thorough grounding in our mother tongue, and includes the essentials of English grammar, spelling, reading from standard authors, and composition, with attention to penmanship when needed.

Composition and Declamation are required in the second, third and fourth years of the Preparatory and Academic Departments.

In the Collegiate Courses, Essays and Declamations are required through the Freshman and Sophomore years, and Orations and Discussions in the Junior and Senior years.

Besides the lessons assigned in the Latin and Greek authors read, other portions of these authors, and passages from other Classics in Greek and Latin are read at sight.

Thorough work in Latin and Greek Composition is done in the Preparatory Course, and in the Freshman year. Roman and Grecian History and Antiquities are regular studies in the Preparatory Department. Prosody is studied in connection with the Latin and Greek Poets read.

Trigonometry and surveying will be taught and practically illustrated by the use of instruments.

The study of Astronomy will be rendered more interesting and profitable by the recent gift to the College of a Clark's Telescope of five-inch object glass.

In History, in addition to text book work, special topics are assigned for side reading, on which abstracts or biographical essays are required.

Students from other schools are admitted only upon examination, and are assigned to their places in the courses of study according to their attainments. They should present themselves for examination the day before the opening of the term.

It is presumed that students will take regular courses, and their studies will be assigned them accordingly, unless a written statement is received from parents or guardians requesting that they be unclassified students with liberty to pursue the studies designated in the written statement.

Parents and guardians are desired to communicate with Heads of Departments with regard to the selection of a course of study.

The standing of students is given them at the close of each term. Parents and guardians may learn the standing of pupils at any time by applying to the Heads of Departments.

No student is permitted to pass from the studies of one year to those of the following year without having done the grade of work prescribed in our rules as necessary to promotion.

Classical and scientific students of our Preparatory Department will be admitted to the Freshman class upon certificate. Other candidates for admission to the

Freshman class of the Classical Course must pass a satisfactory examination in the following studies or their equivalents: Latin Grammar, Four Books of Cæsar, Six Orations of Cicero, Six Books of Virgil's Aeneid, Jones' Latin Prose Composition, Translation of Latin at Sight, Three Books of Anabasis, Three Books of Homer's Iliad, Herodotus, Greek Prose Composition, Translation of Greek at Sight, Chardenal's 1st and 2d Courses in French, Arithmetic, including the Metric System, Wentworth's Complete Algebra, Wentworth's Geometry, Physical Geography, Elementary Rhetoric, United States History, Roman and Greek History, Life, and Mythology, and Ancient and Modern Geography. Candidates for admission to the Scientific Course from other schools must pass a satisfactory examination in all the studies of the Scientific Preparatory Course.

To enter the Academic or Preparatory Courses, pupils must be able to read, write and spell well, and to pass an examination in Geography, Arithmetic to square root, Elementary Grammar, and History of the United States.

The Sub-Preparatory Course of three years will give special training in these branches:

1st year: Grammar School Geography begun; Practical Arithmetic to decimals; Language Lessons.

2d year: Geography completed; Arithmetic to percentage; Language Lessons.

3d year: History of United States; Arithmetic to square root; Grammar. Reading, Writing and Spelling throughout the Course.

Drawing two hours a week is given to students in all Departments without extra charge.

ROLLINS COLLEGE is located at Winter Park, Orange County, Florida. It is on the South Florida Railroad, eighteen miles south of Sanford, and four miles north of Orlando. It may also be reached via Orlando over the Florida Central & Peninsular and Orlando & Winter Park Railways, the latter road having a station at the College Campus. Its five tasteful buildings are beautifully situated upon the shore of Lake Virginia, and overlooking the town.

The Lyman Gymnasium will be completed, furnished and ready for use at the opening of the year, and will add much to the value of the physical training given. There are excellent opportunities for boating upon three connecting lakes. No locality is more healthful.

Young ladies and gentlemen, who cannot endure the Northorn winters, and yet have health sufficient to pursue their studies under favorable circumstances, will find here an Institution of the best grade, and in a delightful climate, where they may hope to pass safely their most critical years, and go forth with health confirmed to strong and useful lives. The Cottages for young ladies and gentlemen, and the Common Dining Hall, furnish a cheerful and cultivated Christian home. The Institution was founded as a Christian College. It is thoroughly Christian, but not Sectarian. Its Charter says: "Its object, which shall never be changed, shall be the Christian Education of youth, and to this end it proposes to provide for its students the best educational facilities possible, and throw about them those Christian influences which will be adapted to restrain them from evil, and prepare them for a virtuous, happy and useful life."

EXPENSES.



On account of the serious losses in Florida the past year, a reduction will be made to boarders of one dollar per week on the price of board and room. The usual rates are given below, but the reduction will be made in the bills.

EXPENSES EACH FOR FALL AND WINTER TERM.

Tuition in Collegiate Department.....	\$18 00
Tuition in Preparatory Department	12 00
Tuition in Sub-Preparatory Department.....	9 00
Music, with use of Piano (extra)	15 00
Music, with use of piano, in classes of two (extra)	12 00
Vocal Music, private lessons (extra)	9 00
Board	48 00
Furnished room, with light	12 00

Rates for the shorter Spring Term will be proportionally less.

Washing fifty cents per dozen. All articles for the laundry must be plainly marked with the owner's name.

TERM bills must be paid at the commencement of each term. No deduction will be made for absence for less than half a term, except in cases of sickness, and then only for board. When students leave before the close of the term, no deduction will be made from bills for tuition or room rent.

All persons boarding in the institution are required to bring two pairs of sheets, two pillow cases, two blankets, a comforter, towels and table napkins. They should also bring an umbrella, rubbers and water proof. The cottages are furnished with single beds, two rooms usually connecting.

No students from abroad will be permitted to room or board out of the institution except under wholesome family influences.

All students are required to attend morning prayers at the College Chapel each school day. The services consist of responsive readings, singing and prayer.

All students boarding in the institution are required to attend church each Sabbath morning, and are earnestly desired, to attend Sabbath school, and Wednesday and Sabbath evening services. The Young Peoples' Society of Christian Endeavor holds its weekly religious service at the church on Sabbath evenings, and most of the teachers and pupils attend the meetings and take part in them.

Calendar 1890-91.



Fall term begins Wednesday, 8:30 A. M., October 1st, 1890.

Fall term ends Tuesday, December 23d, 1890.

Winter term begins Friday, 8:30 A. M., January 2d, 1891.

Winter term ends Wednesday, March 25th, 1891.

Spring term begins Thursday, 8:30 A. M., April 2d, 1891.

Spring term ends Wednesday, June 3d, 1891.

