

6-1934

Rollins College on Lake Virginia's Shore; with Forward by Hamilton Holt

Rollins College
Rollins College

Follow this and additional works at: https://scholarship.rollins.edu/archv_books

Recommended Citation

College, Rollins, "Rollins College on Lake Virginia's Shore; with Forward by Hamilton Holt" (1934). *Books about Rollins College*. 5.
https://scholarship.rollins.edu/archv_books/5

This Open Access is brought to you for free and open access by the Archives and Special Collections at Rollins Scholarship Online. It has been accepted for inclusion in Books about Rollins College by an authorized administrator of Rollins Scholarship Online. For more information, please contact rwalton@rollins.edu.

ROLLINS COLLEGE

ON LAKE VIRGINIA'S SHORE



RANDOM VIEWS OF THE CAMPUS

Issued Quarterly; Admitted as Second-class Matter at Winter
Park, Florida, Post Office, under Act of Congress of July, 1894.

Gift of the Ralph Trevels Estate
August 2009

A STATESMAN SPEAKS OF EDUCATION

"I cannot express in sufficient terms my sense of appreciation of the high honor conferred upon me in the bestowal of this degree. I am peculiarly appreciative of this distinction both because it is conferred on the occasion of the fiftieth anniversary of the founding of Rollins college and also by reason of my keen interest in the spirit and methods that have been introduced into the activities of teaching by Rollins College.

"While other schools have been following scrupulously in the beaten path in methods of education, those in charge of this institution were willing to step out resolutely and boldly and undertake to blaze a new course that would give the student a considerably increased amount of latitude and lee-way and freedom, while at the same time preserving a due sense of responsibility. This balance of freedom with responsibility to the great extent it has been accomplished by this institution of learning results in equipping the student, in my judgment, to the fullest possible extent to grapple with the practical problems of the future."—*Remarks by the Honorable Cordell Hull, Secretary of State of the United States, at the Founders' Day Convocation, February 25, 1935, when Rollins College conferred upon him the honorary degree of Doctor of Humanities.*



HAMILTON HOLT, Litt.D., L.H.D., LL.D.
President of Rollins College, Winter Park, Florida.

ROLLINS COLLEGE

ON LAKE VIRGINIA'S SHORE



Copyright Page Studios

*A view of the Travertine tower of the Knowles Memorial Chapel as seen
through the tree-tops from the Campus*



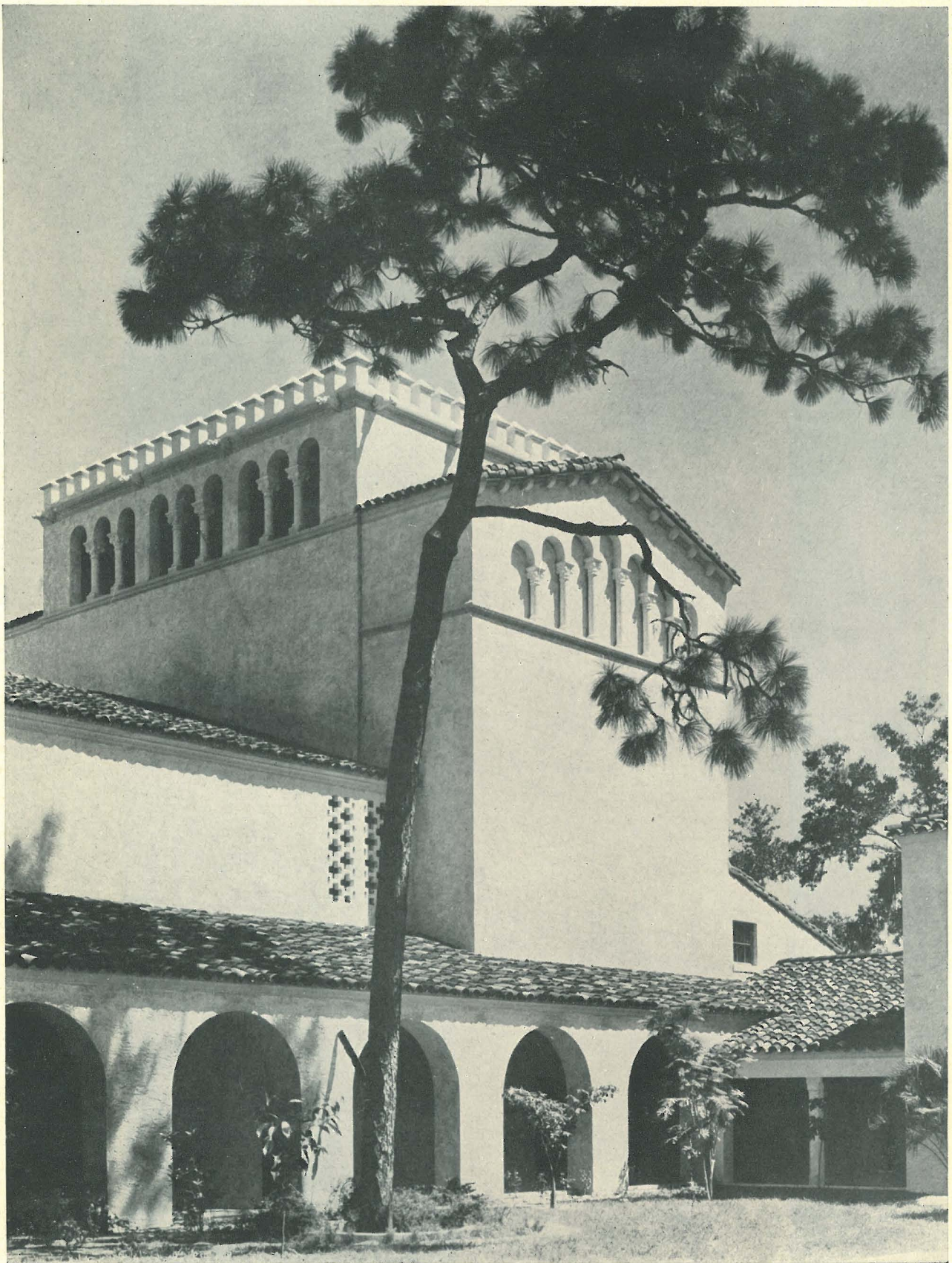
A view of the interior of the Knowles Memorial Chapel presented by Frances Knowles Warren (Mrs. George E. Warren), as a memorial to her father, one of the founders of Rollins College fifty years ago



A general view of the Knowles Memorial Chapel, the gift of Frances Knowles Warren (Mrs. George E. Warren), as a memorial to her father. The building was designed by Cram and Ferguson, of Boston, the architects of the Cathedral of St. John the Divine, in New York City



The bas-relief above the entrance to the Knowles Memorial Chapel represents a Franciscan friar planting the Cross on American soil, with a group of Conquistadores on one hand and of Florida Indians on the other, while in the distance are two Spanish caravels. The bas-relief was carved by Ardolino of New York City



The scenery loft and loggia of the Annie Russell Theatre as seen from the Chapel Garden



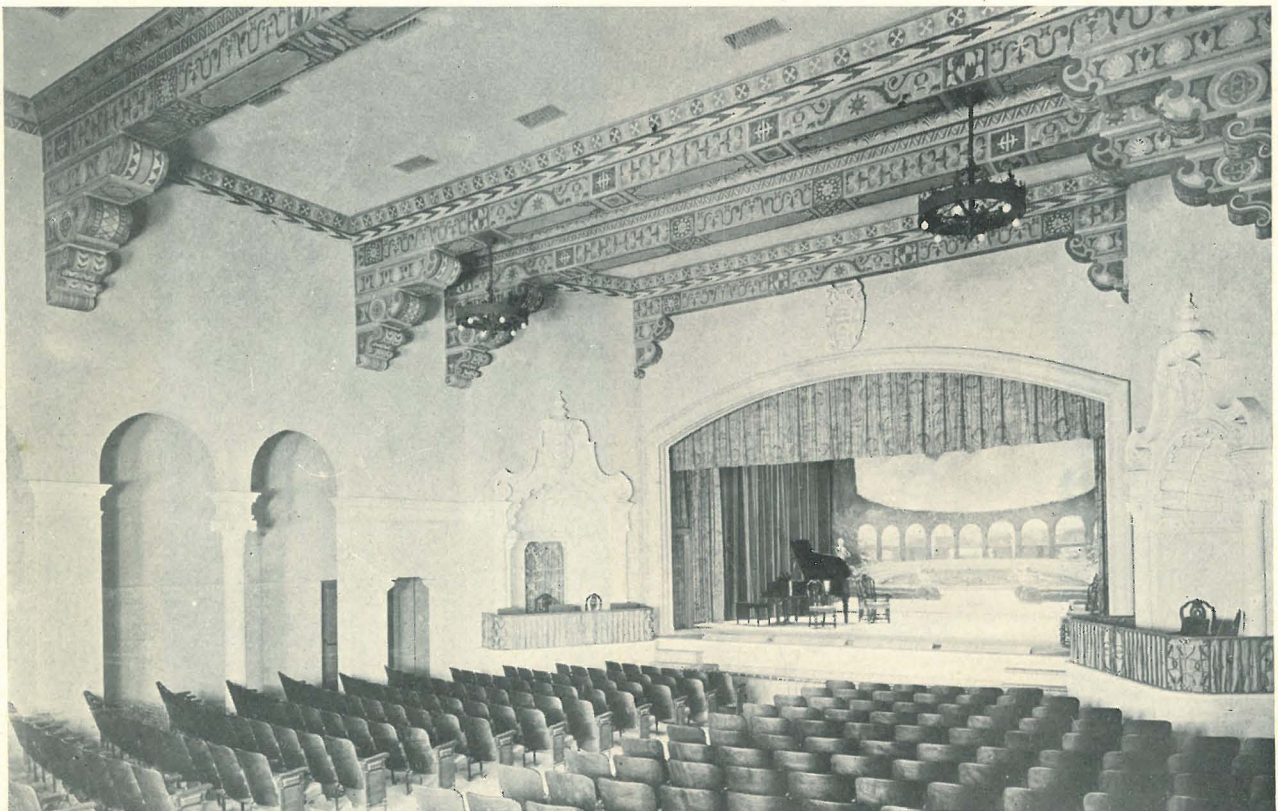
The Annie Russell Theatre, the gift of Mrs. Edward W. Bok in honor of her life-long friend, Miss Annie Russell, the famous actress, now a resident of Winter Park and Artistic Director of the Theatre



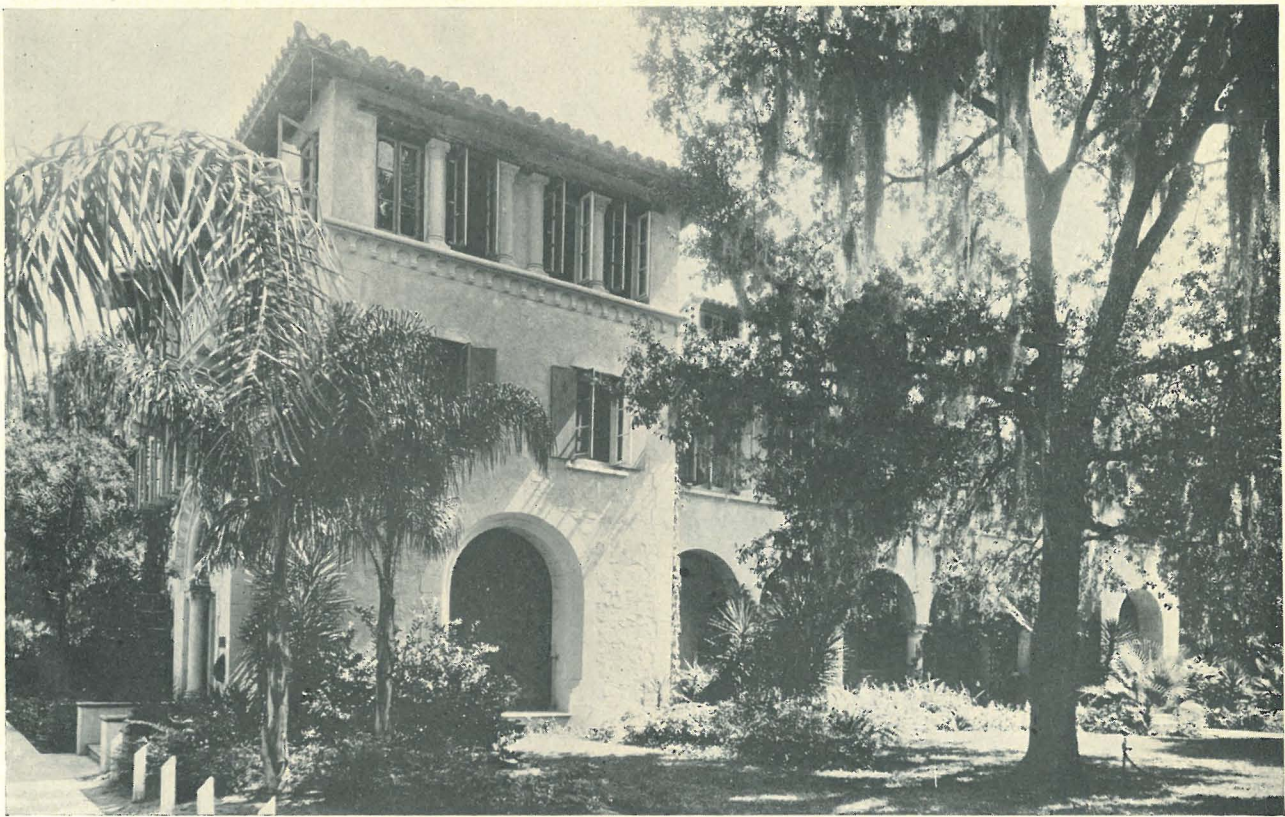
A scene from Miss Annie Russell's production of Bayard Veiller's "The Thirteenth Chair," which was presented in the Spring of 1933 at Rollins. Miss Russell, who returned to professional activity to play the familiar role of "Rosalie LaGrange" in this famous play, is shown seated in the center



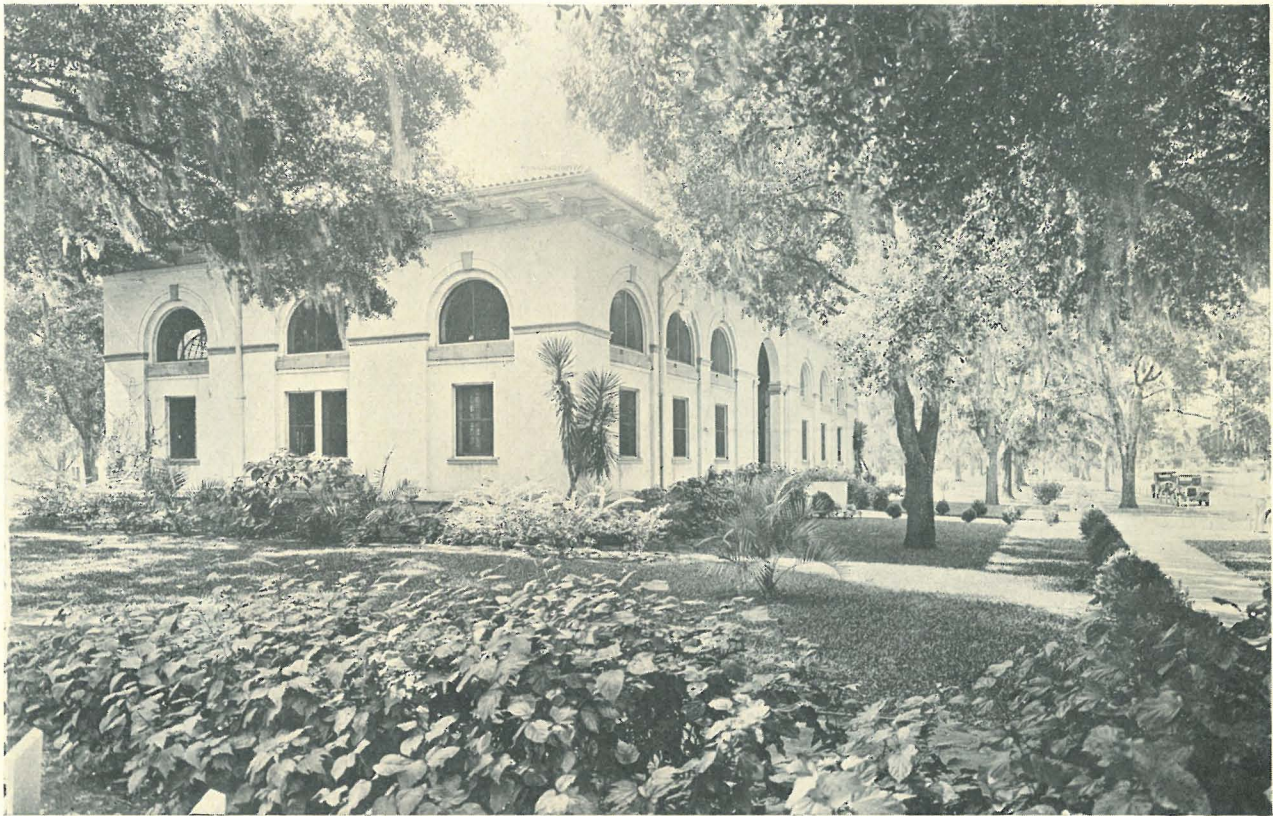
A scene from "Hamlet," one of the Student Company productions presented in the Annie Russell Theatre during the season of 1934-5



The interior of the Annie Russell Theatre, the gift of Mrs. Edward W. Bok to Rollins College



Rollins Hall for Men, overlooking Lake Virginia, was the first unit completed in the new Rollins architectural plan



Carnegie Hall contains the Administration Offices and the main Library



Pugsley Hall is one of the two new residences for women. It is connected with Mayflower Hall by a loggia, both halls overlooking Lake Virginia



A section of the court between Mayflower and Pugsley Halls



A view of the lounge in Mayflower Hall. This room with suite for the House Mother, the guest suite and the kitchenette occupy the entire ground floor. Over the fireplace at the left is a piece of a beam from the Pilgrim ship, The Mayflower, and a fragment of Plymouth Rock



Mayflower Hall, one of the two new residences for women, is connected with Pugsley Hall by a loggia overlooking Lake Virginia



The Horseshoe Drive, showing the porch of Lyman Hall, Chase Hall, and the Conservatory of Music



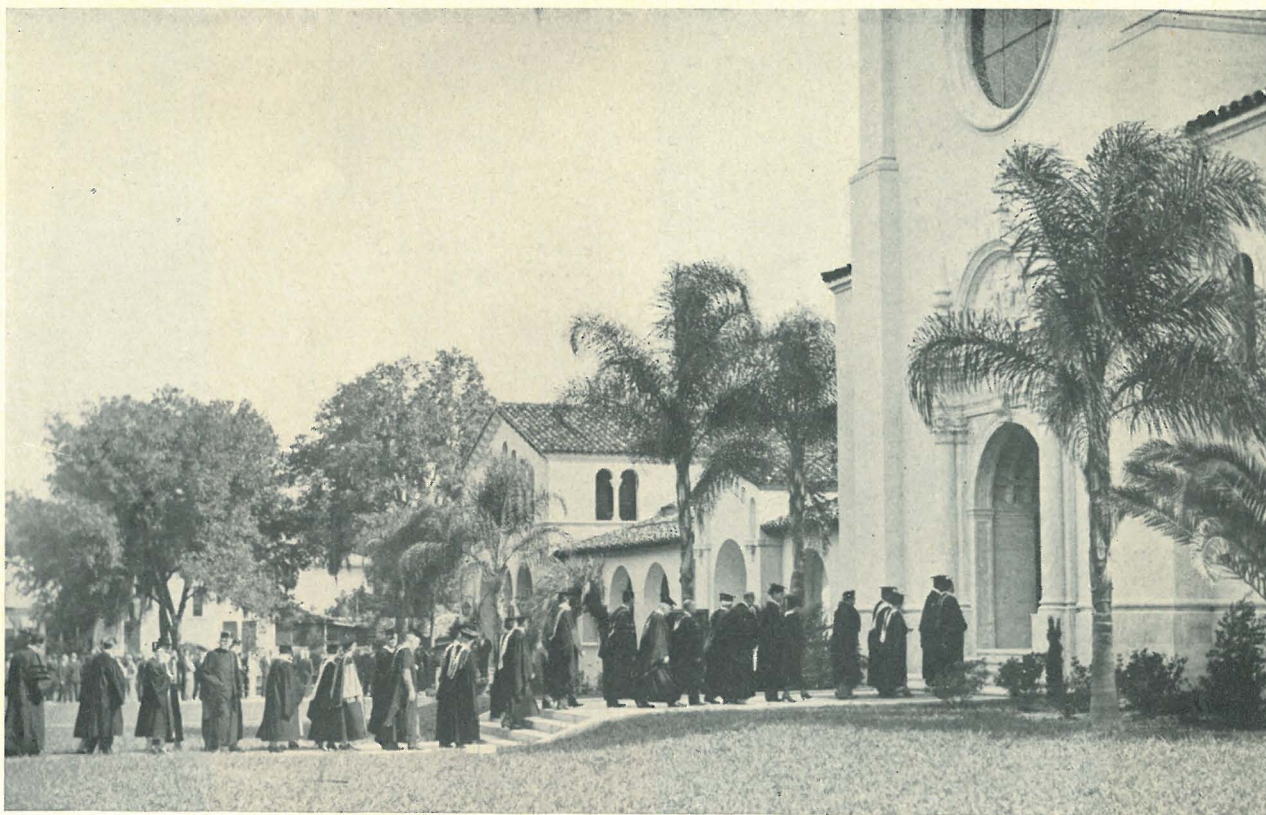
The "Pelican", the Rollins seashore camp at Coronado Beach, near Daytona Beach, sixty miles from the Campus, attracts week-end parties of faculty and students throughout the year



President Hamilton Holt explaining to President James R. Angell of Yale, the "Rollins Walk of Fame". This Memorial Walk is lined with more than 450 stones taken from the birthplaces or former homes of famous men and women from all parts of the world



A group of students with chaperones week-ending at the Rollins camp on Shell Island at Wekiwa Springs, one of the subterranean rivers that come to the surface in Florida. This camp is located in a ten-mile semi-tropical jungle on the site of a prehistoric Indian camp.



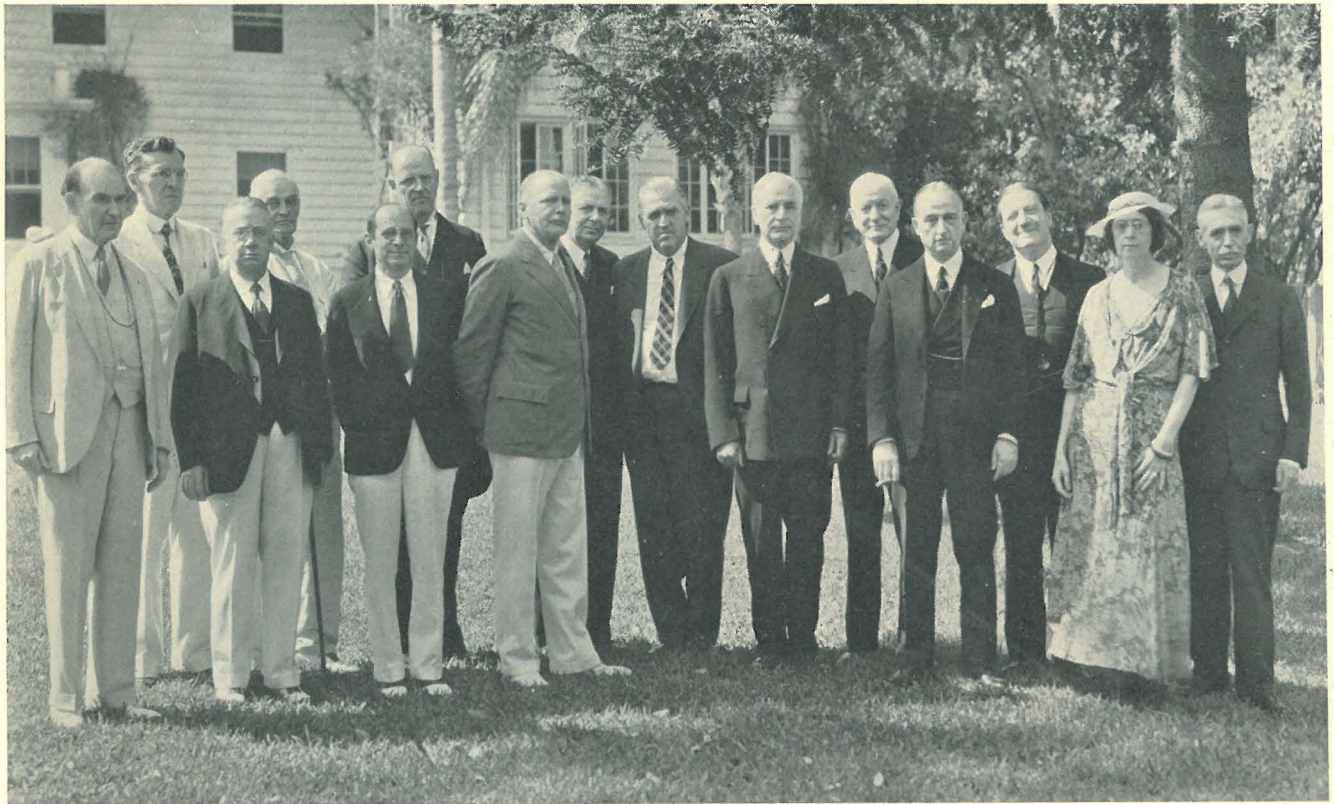
The Academic Procession on Matriculation Day



The Chapel Choir, composed of students of Rollins, sings each Sunday at Morning Meditation



A panoramic view of the 6000 "subscribers" to the "Rollins Animated Magazine", the only magazine in the world that "comes alive." distinguished literary people appeared on the platform and read their



A photograph of the "contributors" to a recent issue of the "Rollins Animated Magazine," published once each year on the Rollins Campus. Reading left to right: Hamilton Holt, editor, Edwin Osgood Grover, publisher, Joseph C. Lincoln, Edwin P. Frost, Arthur Guiterman, Dr. John J. Tigert, H. V. Kaltenborn, Richard Lloyd Jones, Rex Beach, U. S. Secretary of State Cordell Hull, Thomas J. Watson, His Excellency Andre de Laboulaye, Rabbi Stephen S. Wise, Eunice Tietjens, Rev. Jay T. Stocking.



The magazine is "published" once each year in February under the live oaks and pines of the Rollins Campus. Last year fifteen "contributions". President Holt is "Editor" of this unique magazine

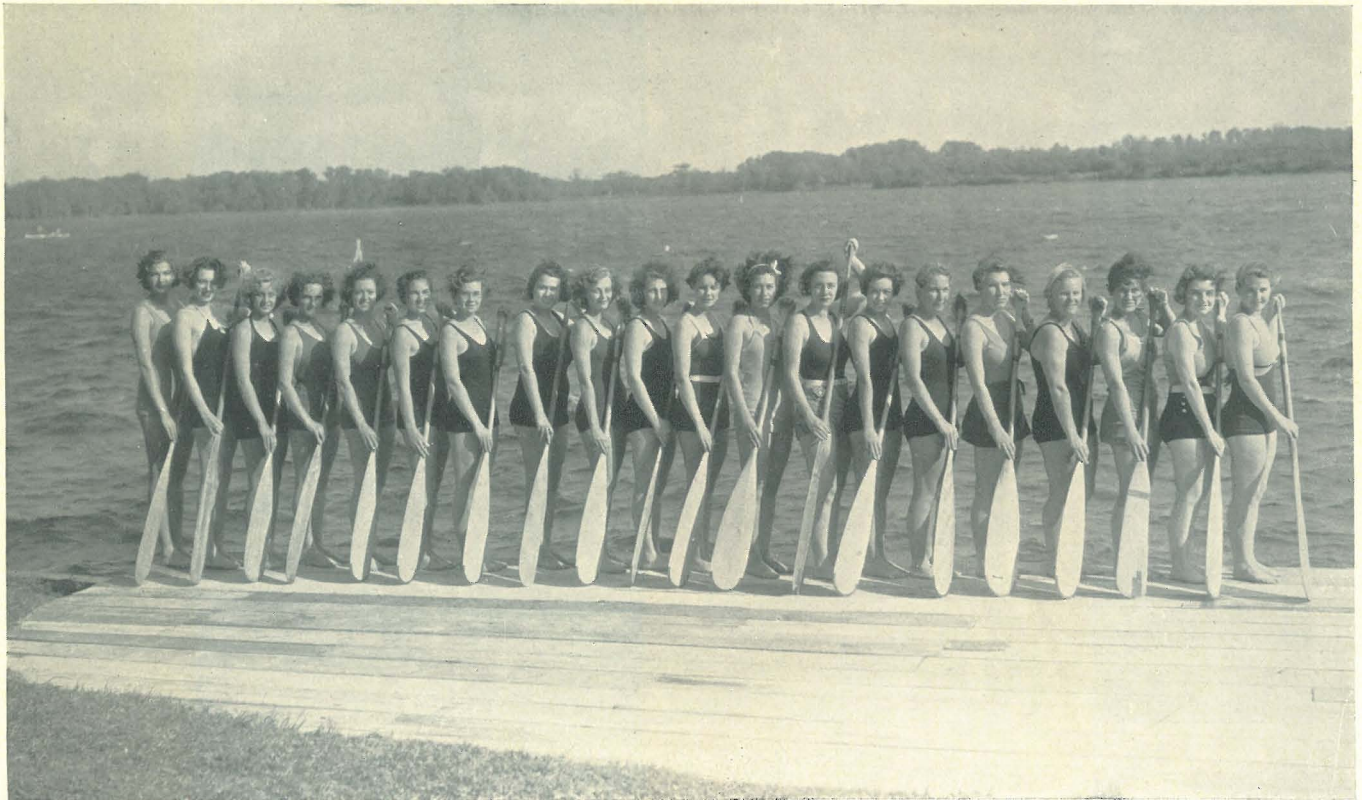
Among the many notable literary persons who have contributed to previous issues of the "Rollins Animated Magazine" are the following:

WILLIAM LYON PHELPS	CALE YOUNG RICE
HENRY GODDARD LEACH	ALICE HEGAN RICE
RAY STANNARD BAKER	SEUMAS MACMANUS
FRED LEWIS PATTEE	CORRA HARRIS
IRVING BACHELLER	PERCY MACKAYE
JESSIE RITTENHOUSE	JOHN ERSKINE
CORRINNE R. ROBINSON	ALBERT SHAW
JOHN PALMER GAVIT	REX BEACH
WILLARD WATTLES	ROBERT HERRICK
OPIE READ	ZONA GALE
ROGER BABSON	JOSEPH LINCOLN
DAN BEARD	JANE ADDAMS
JOSEPH EARLY	IRVING FISHER
S. PARKES CADMAN	FRED B. SMITH
WALTER PRICHARD EATON	
MARJORIE KINNAN RAWLINGS	

Volume X. No. 1, will be published February 23, 1936



Secretary of State Cordell Hull reading his contribution from the outdoor "Publication Office" of the "Rollins Animated Magazine."



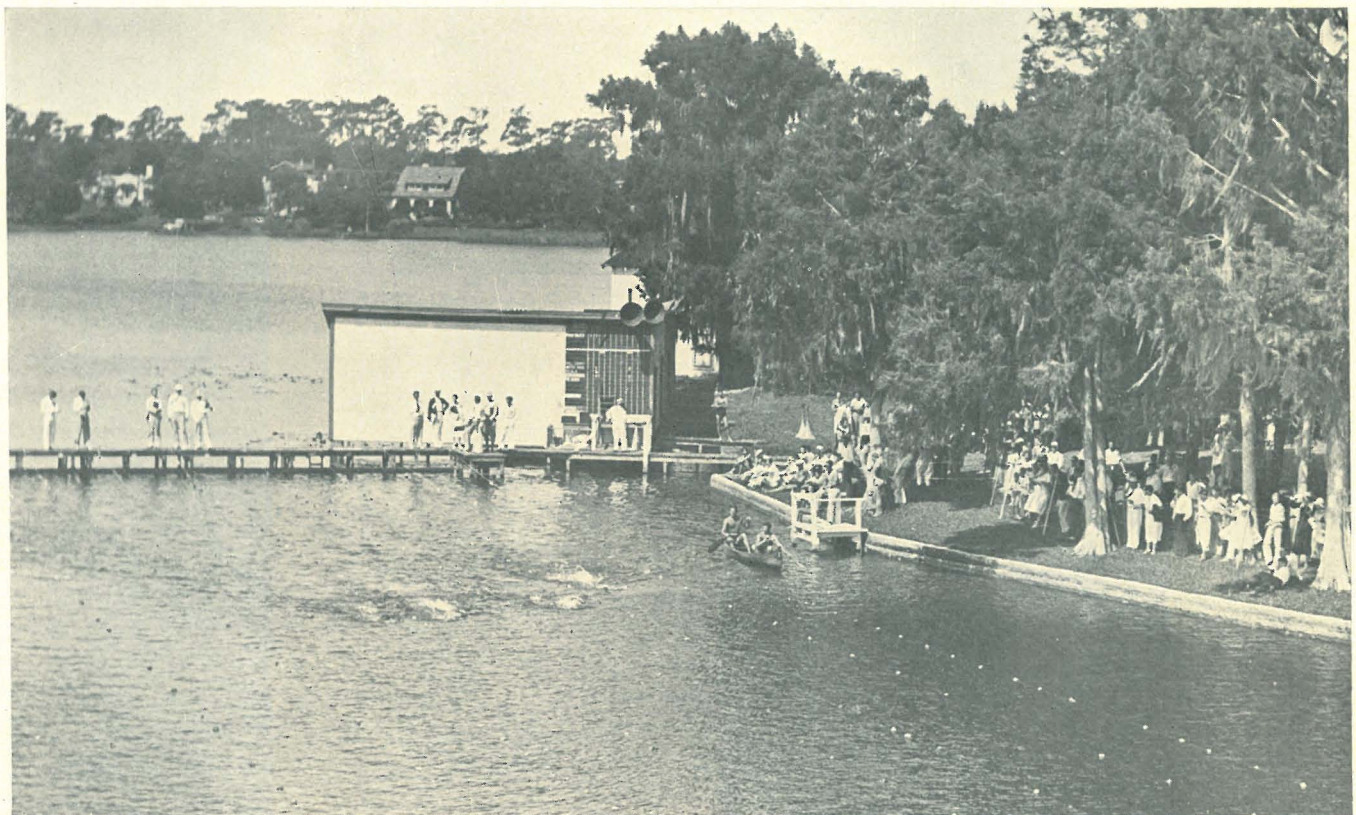
Two war canoe Crews line up on the boat dock before a workout on Lake Virginia



The Archery range is beautifully situated on the shore of Lake Virginia



A class in Golf sees a demonstration by one of the student leaders. Four golf courses near the Campus are available to the students of Rollins



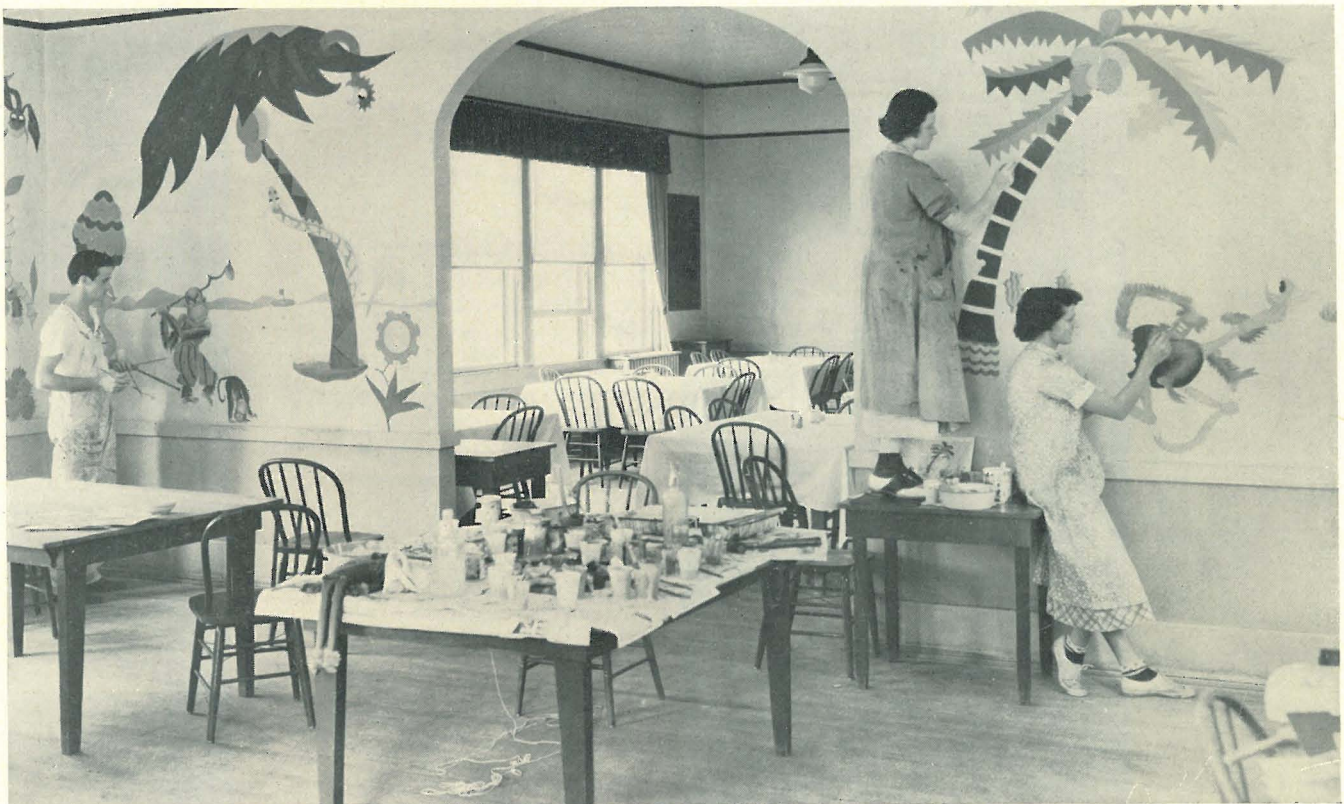
The 110-yard regulation swimming course on Lake Virginia is ideal for aquatic meets



South Entrance to the drive about The Horseshoe, the largest open green on the Campus of the New Rollins



Horseback riding is one of the more popular recreational diversions for women students at Rollins



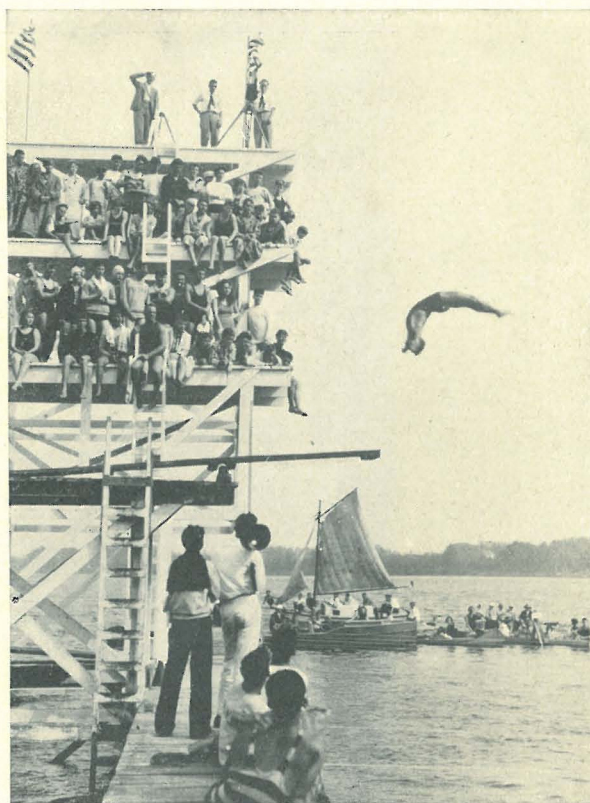
Students in Art undertake to brighten the walls of the "Beanery."



The College Dining Hall known as the "Beanery."



Golf, one of the more popular sports at Rollins



High Diving at the Annual Water Meet



Fencing on the platform on the Lake Virginia Shore is an all-year-round outdoor sport and recreational activity



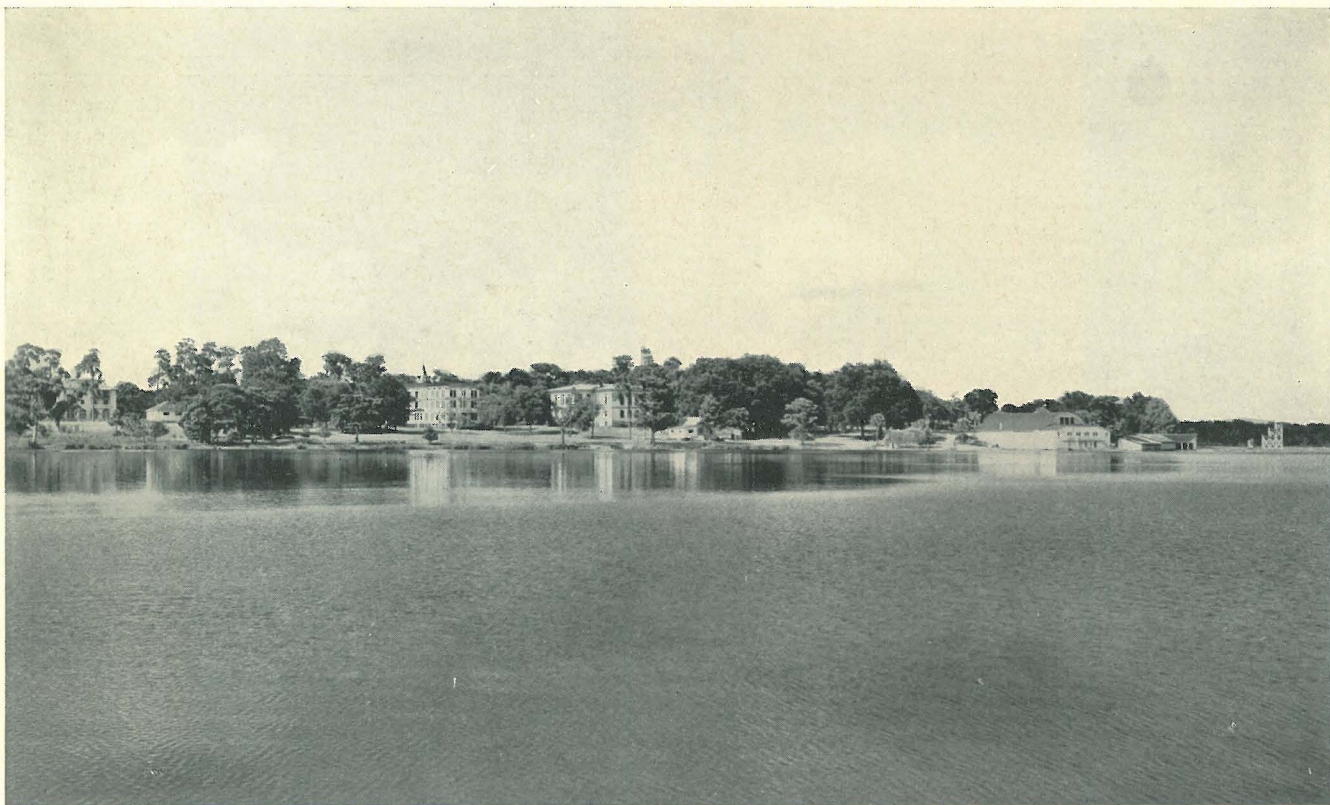
Baseball, one of the major sports at Rollins, is played at Harper-Shepherd Field, a gift from the City of Winter Park to the College



In major sports, Rollins usually excels in Football. During the past five years, the Tars have lost only seven games against twenty-five victories and four ties



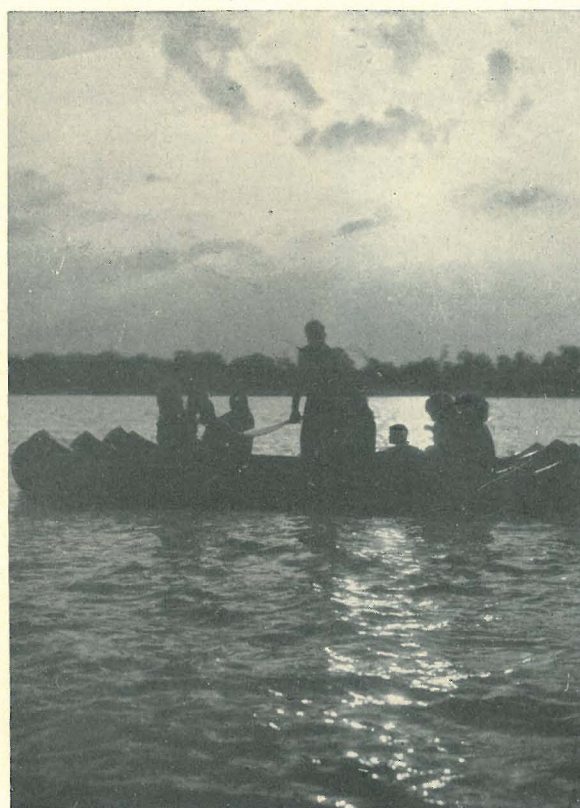
A Campus view showing part of the Walk of Fame



Partial view of the lake front of the Rollins Campus of forty-five acres showing several of the older buildings



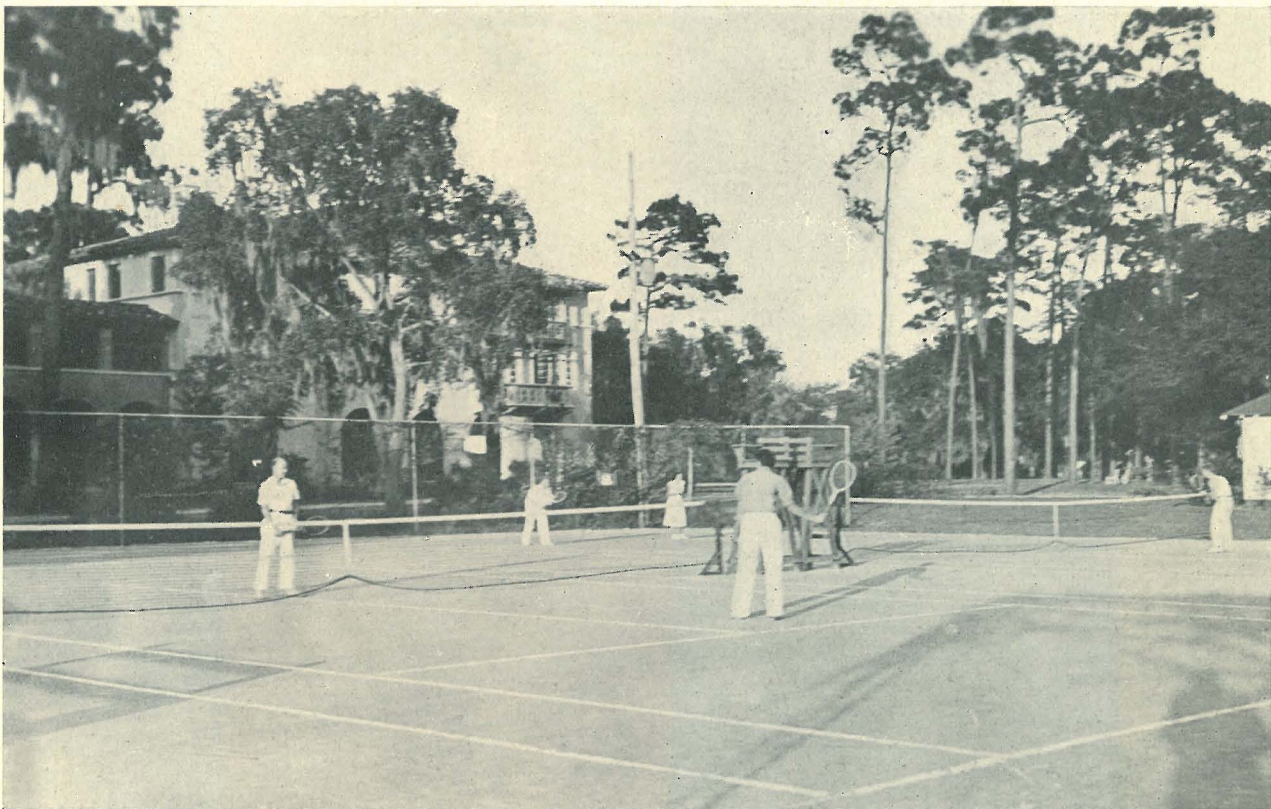
The Swimming Course and Diving Tower



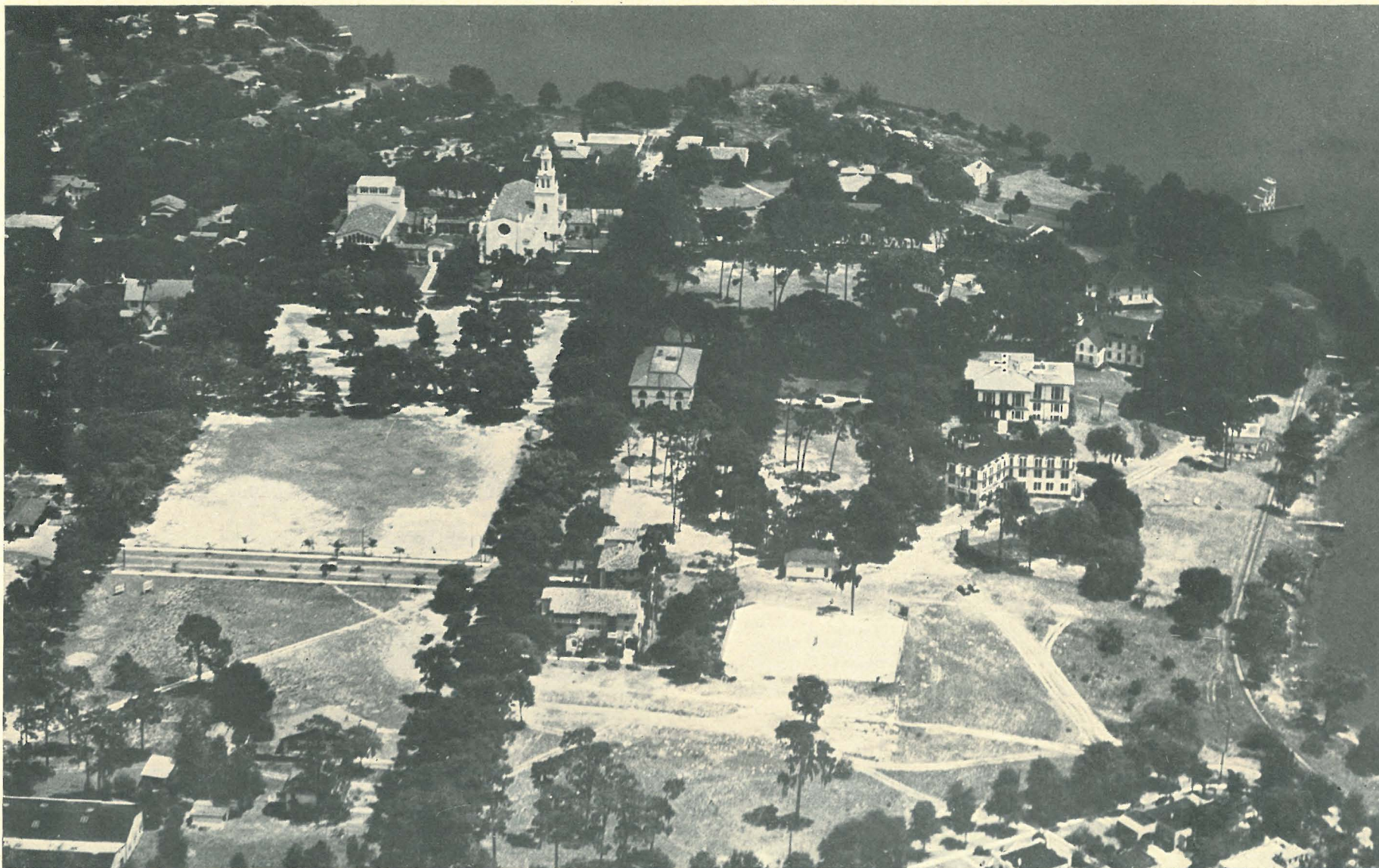
Canoeing by moonlight on Lake Virginia



The Rollins Varsity Eight on Lake Maitland. In the past two years the Rollins Crew has entered intercollegiate competition in New York City and Ohio, contesting at Marietta in 1935 in the Mid-American Intercollegiate Regatta



Tennis is an all-the-year sport at Rollins



A recent airplane view of the Rollins Campus. Mayflower and Pugsley Halls are shown in the foreground. Carnegie Hall is almost exactly in the center, and the Annie Russell Theatre and the Knowles Memorial Chapel are shown at the left center



The Chapel Garden, enclosed on two sides by cloisters connecting the Knowles Memorial Chapel and the Annie Russell Theatre, is one of the most beautiful spots on the Campus

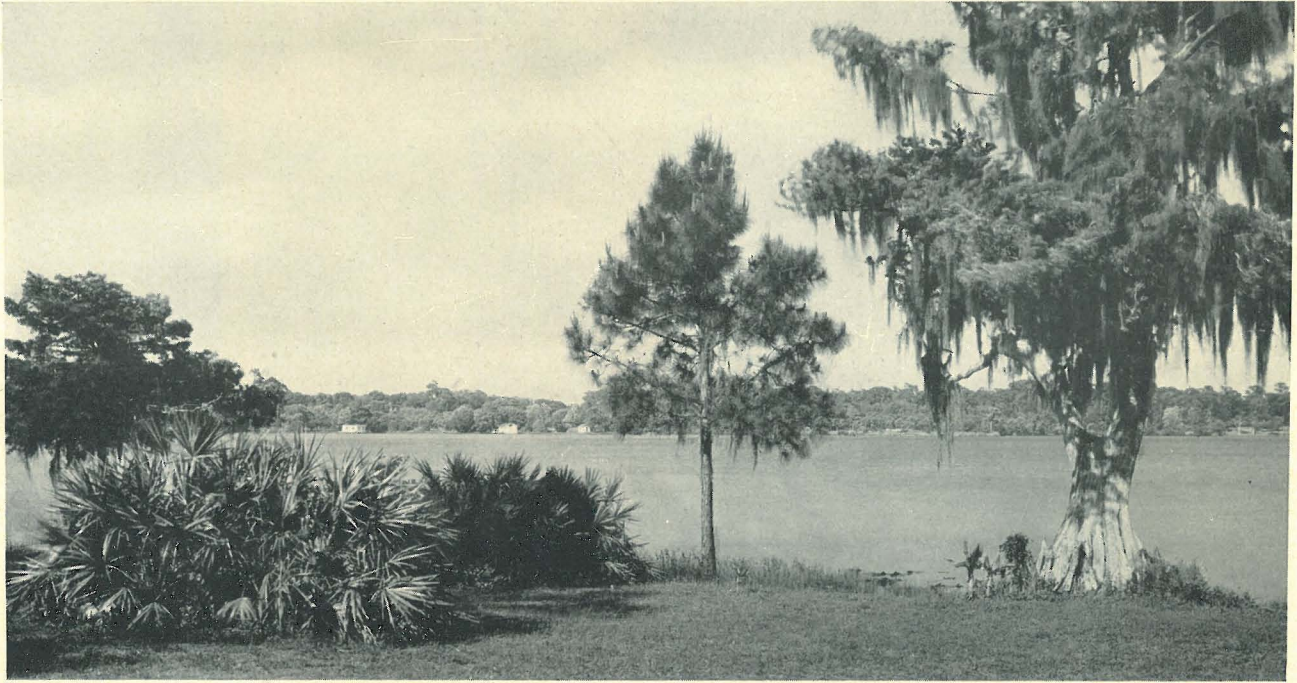


Pinehurst Cottage, one of the two original buildings erected fifty years ago, is used entirely for classes by the Rollins Conservatory of Music



THE CAMPUS OF THE NEW ROLLINS

This birds-eye view of the Rollins Campus shows the grouping of the new buildings. Five units are already completed and four more (residences for students) will be built in 1935-36. The Knowles Memorial Chapel and the Annie Russell Theatre are shown in the foreground at the left. Rollins Hall for men is at the extreme left. Mayflower Hall and Pugsley Hall for women are at the extreme right.



A glimpse across Lake Osceola, one of eighteen lakes lying wholly within the limits of Winter Park. It is connected with Lake Maitland and a half-mile canal



A view of one of the canals which connect four of the eighteen lakes lying within the city limits



A Campus scene showing Rollins Hall for Men

THERE may be on this continent a village more beautiful than *Winter Park* but if so I have never seen it. *Old Deerfield* is lovely but it is dead. *Winter Park* is alive. Its beauty is that of youth, its spirit looks forward, not backward. It is like a stirring New England community in the time of my boyhood in a setting of everlasting verdure and many flowers and abundant sunlight.

IRVING BACHELLER



*Showing the location of Rollins College and Winter Park in
the high and rolling "lake region" of central Florida*